



# WHEEL BOSS CLEANING SYSTEM



## ***YOUR CUSTOMERS WILL NOTICE THE DIFFERENCE!***

***No other wheel cleaning system conquers the distinct challenges of wheel and tire cleaning like the Wheel Boss. The unique design of the MacNeil all-in-one wheel brush reaches deep to scrub rims and tires to a sparkling clean, while eliminating additional labor and prep time.***

### ***Less Work, More Clean***

With a choice of a standard nylon stepped brush or patented cam-style foam material, the Wheel Boss delivers a superior clean. The unique, camshaft style foam brush pulsates to effectively reach into wheels without bridging critical sections – a typical problem with other wheel cleaners. Thanks to the foam assembly brush design, replacing the hardworking brush tips is quicker, easier and more economical.

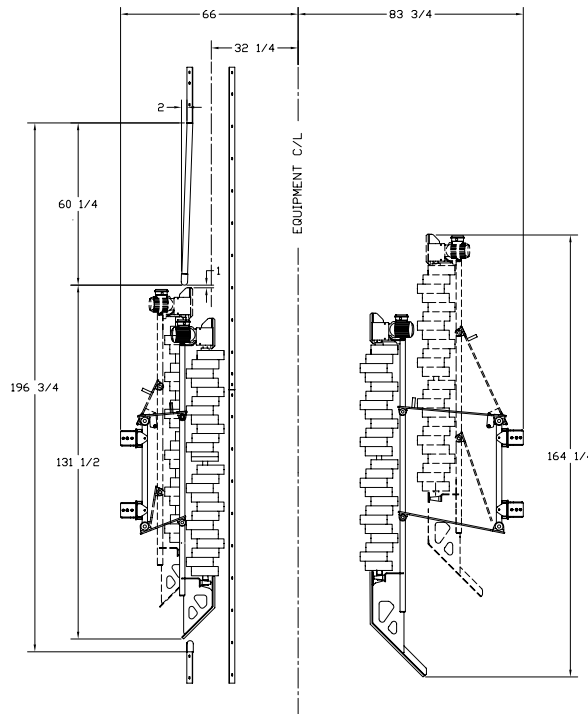
### ***Add It Today, Profit Tomorrow***

Wheel Boss is a quick and easy revenue-generating add-on, ideal for new sites and existing operations.



## Why Choose Wheel Boss?

- Unique brush assembly simplifies replacement, saving money through reduced labor and downtime
- Available with patented cam-style foam brush material or nylon stepped brush design
- Cam-style foam brush – the safest and gentlest clean in the industry. Reaches deep into wheels without bridging critical areas
- Simple height adjustment and leveling
- Rugged construction ensures maximum product life and lower maintenance costs
- Ideal for tunnel and in-bay automatic car washes



### Tires That Turn A Profit

#### What's Included:

- Maintenance-free, Pro-Coat finish
- Stainless-steel hardware
- Electric drive
- Individually controlled side pressure
- One-year manufacturer warranty

### Technical Data

#### Electric Motor:

- IP-65 electric motor
- 0.5kW/1HP each
- 3 phase—208/230/460 VAC 60 Hz
- 159 RPM

#### Pneumatics:

- 1/4" (6.35 mm) cyl. lines
- 0.5 CFM (0.014m<sup>3</sup>/min)
- Supply 50PSI (3.4 bar)

#### Control Voltage:

- 24 VAC control voltage signal OR
- 110 VAC control voltage signal

### Affordable, Unbeatable Car Wash Equipment

For more than 30 years, MacNeil Wash Systems has provided superior car wash equipment to the tunnel car wash industry, automotive dealers, fleet and rental markets. Our turnkey systems, profit-boosting add-ons and cost-effective retrofits deliver a consistently superior clean with lower maintenance, higher throughput and greater revenue opportunity. Today, MacNeil equipment is more affordable than ever. Put us to the test.

MacNeil reserves the right to revise designs, make corrections, add or delete features and change specifications at any time without notice or obligation. Information provided is for reference only and is not to be used for installation or construction purposes. Refer to MacNeil Wash Systems' equipment drawings for installation specifications



**OUTLASTS AND OUTSHINES THE REST.**

MacNeilWash.com 800.361.7797